

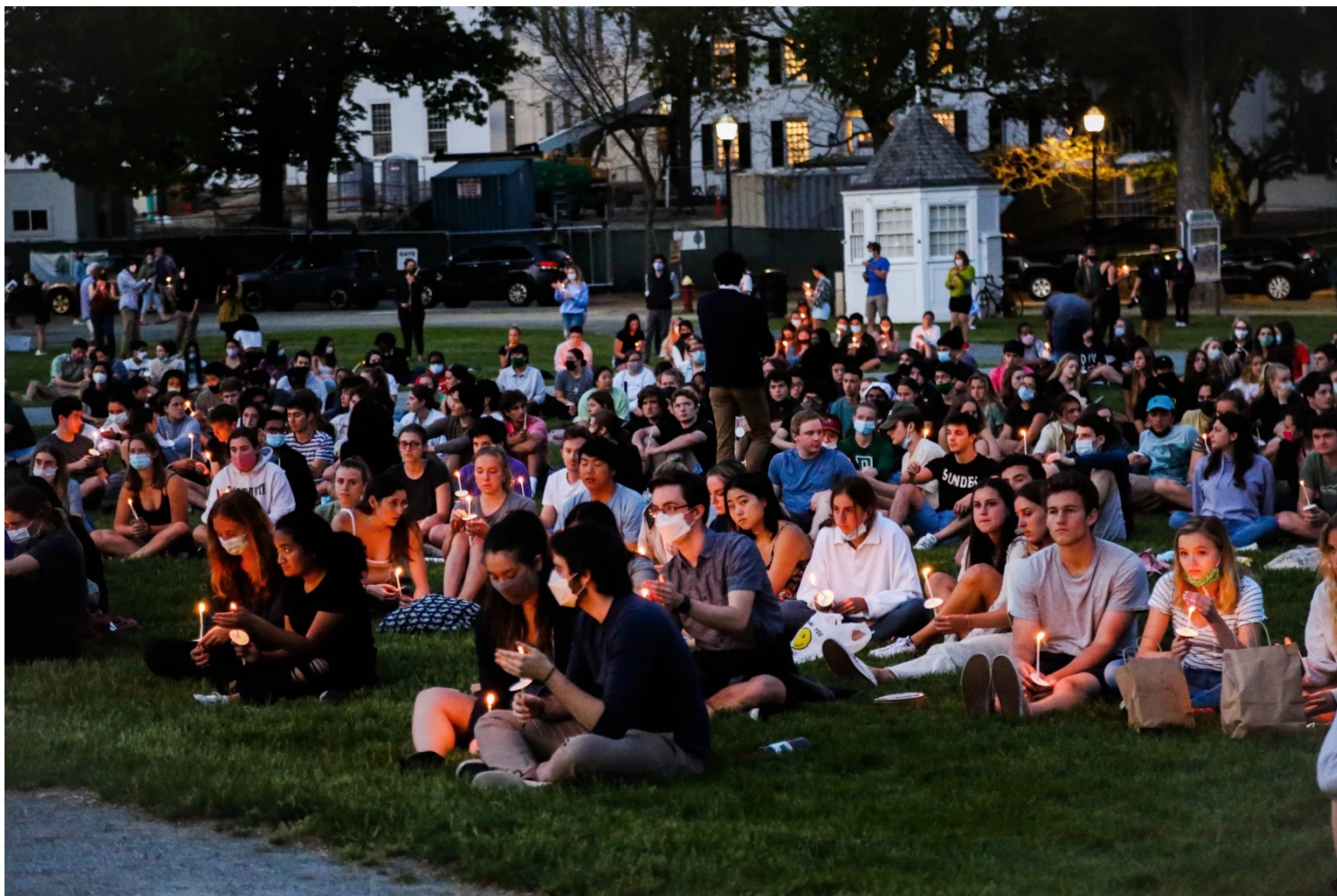
THE CHRONICLE OF HIGHER EDUCATION

'A COMPLICATED BALANCING ACT'

Colleges Face More Pressure to Keep Students With Mental-Health Conditions Enrolled

By *Carolyn Kuimelis*

DECEMBER 8, 2022



NAINA BHALLA, THE DARTMOUTH

Students at a candlelight vigil to commemorate the lives of four Dartmouth College students who died during the 2020-21 academic year.

A lawsuit filed last week against Yale University has reignited a debate about how colleges should best help students who are going through serious mental-health crises.

The complaint against Yale reflects a larger shift in which colleges are under increasing pressure — from the federal government, court rulings, advocacy groups, and students themselves — to accommodate students with mental-health conditions so they can stay enrolled while they receive treatment.

The new lawsuit centers on colleges' withdrawal policies, which have been the subject of scrutiny by mental-health advocacy groups in recent years. The plaintiffs, two

To continue reading for FREE, please sign up.

A free account provides you access to free articles each month, newsletters, job postings, salary data, and exclusive store discounts.

First Name

Last Name

Email

Password



Yes, please send me Academe Today, *The Chronicle's* daily flagship newsletter.

By creating a free account, you are agreeing to receive updates and special offers from *The Chronicle* and our selected partners. Unsubscribe links are provided in every email.

View our [user agreement](#) and [privacy policy](#).

Already have an account?

Subscribe today! Try unlimited digital access for only \$1 a week to start.

Clarification (Dec. 9, 2022, 11:33 a.m.): This story has been updated to clarify comments that Victor Schwartz made about Yale's mental-health policies and colleges' protocols for students who are on leave.

We welcome your thoughts and questions about this article. Please [email the editors](#) or [submit a letter](#) for publication.

HEALTH & WELLNESS

STUDENT SUCCESS

ACCESS & AFFORDABILITY

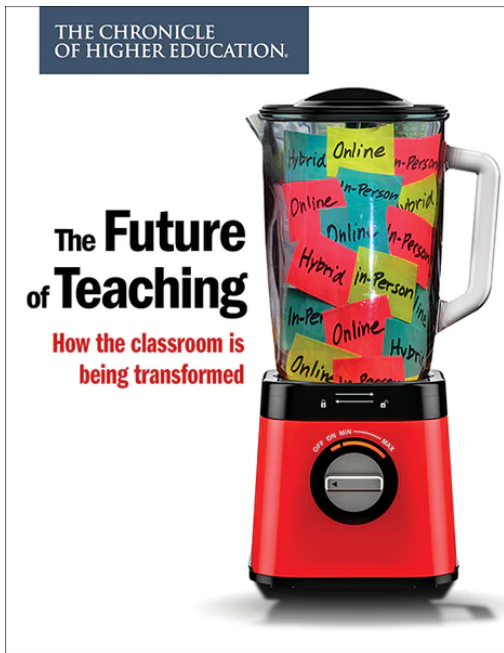
RISK MANAGEMENT

LEADERSHIP & GOVERNANCE

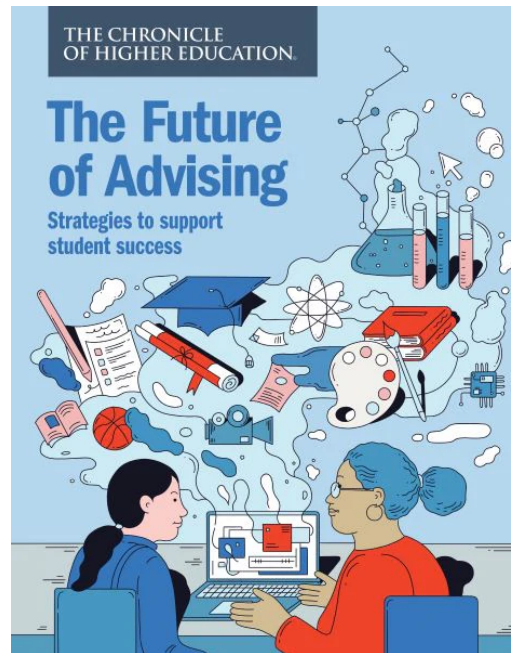
Carolyn Kuimelis

Carolyn Kuimelis is a reporting intern at *The Chronicle*. Follow her on Twitter [@CKuimelis](#), or email her at carolyn.kuimelis@chronicle.com.

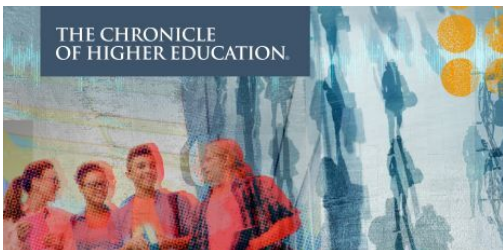
IN THE CHRONICLE STORE

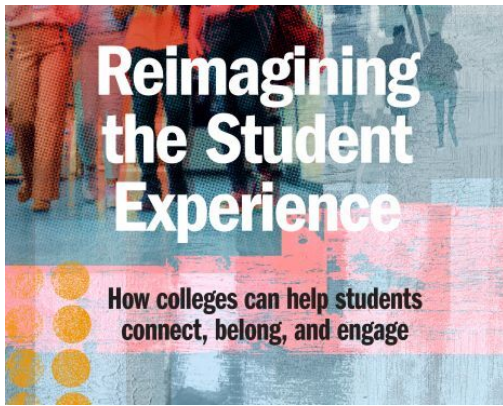


The Future of Teaching



The Future of Advising





Reimagining the Student Experience



The Library of the Future



1255 23rd Street, N.W. Washington, D.C. 20037

© 2023 The Chronicle of Higher Education